

# THE KENNETT

THREE BEDROOM HOME



Individual plots may vary, please speak to the Sales Adviser



Over 2.5 storeys you will find a 3 bedroom home. Discover an open-plan kitchen diner with French doors to the rear garden. At the front of the home is a bay-fronted

lounge. On the first floor are two double bedrooms and separate bathroom. The top floor is a 21ft dedicated main bedroom with en-suite.

Features are plot specific. Please refer to working drawings.



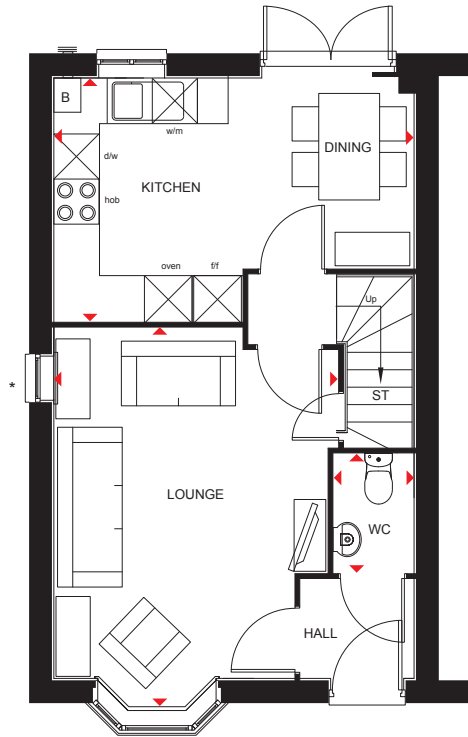
DAVID WILSON HOMES  
WHERE QUALITY LIVES

# THE KENNETT

THREE BEDROOM HOME

## Key

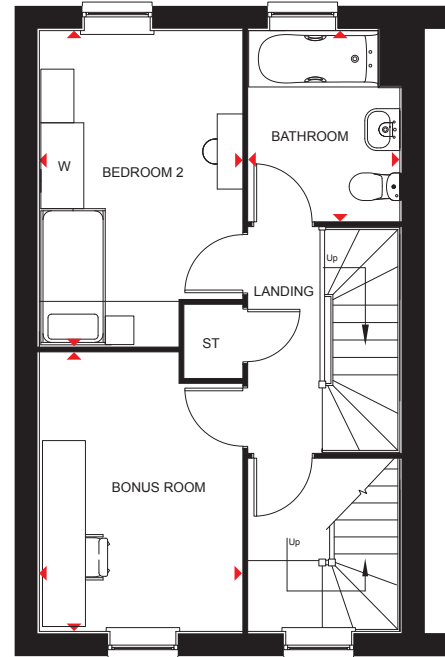
B	Boiler	wm	Washing machine space	dw	Dishwasher space	◀▶	Dimension location
ST	Store	f/f	Fridge/freezer space	W	Wardrobe space		



\*optional window refer to sales advisor for individual plots

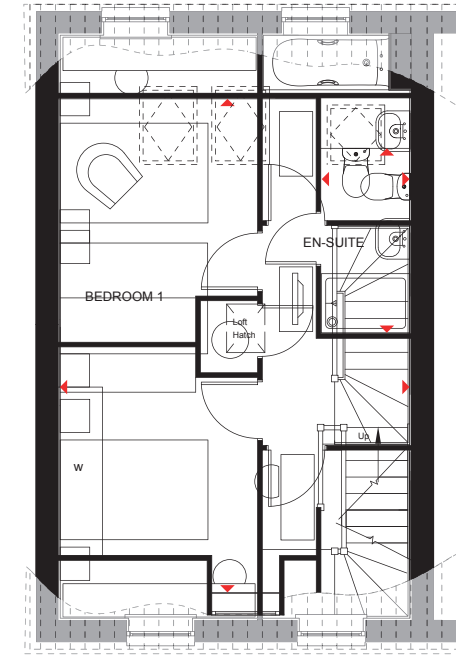
### Ground Floor

Lounge/Dining	5001 x 3729 mm	16'4" x 12'2"
Kitchen	4733 x 3197 mm	15'6" x 10'5"
WC	1561 x 1054 mm	5'1" x 3'5"
Hall	1489 x 1300 mm	4'11" x 4'3"
Lobby	1153 x 905 mm	3'9" x 2'9"



### First Floor

Bedroom 2	4116 x 2659 mm	13'6" x 8'8"
Bedroom 3	3658 x 2659 mm	12'0" x 8'8"
Bathroom	2498 x 1985 mm	8'2" x 6'6"
Landing	2952 x 967 mm	9'8" x 3'2"



### Second Floor

Bedroom 1	6681 x 4733* mm	21'11"* x 15'6"
En Suite	1189 x 2497* mm	3'11" x 8'2"*

\*Overall floor dimension includes lowered ceiling areas

Plots 82 - 85.

We are on the New Homes Quality Code register of registered developers. "We" refers to the Barratt Developments PLC group brands including Barratt London, Barratt Homes and David Wilson Homes. All images used are for illustrative purposes. The images and the dimensions given are illustrative for this house type and individual properties may differ. Please check with your Sales Adviser in respect of individual properties. We give maximum dimensions within each room which includes areas of fixtures and fittings including fitted furniture. These dimensions should not be used for carpet or flooring sizes, appliance spaces or items of furniture. All images, photographs, dimensions and energy efficiency features depicted are not intended to be relied upon for, nor to form part of, any contract unless specifically incorporated in writing into the contract. BDW005089/AUG24

